

# F110 Quick Start Guide



**T**hank you for purchasing the Falcon F110 monitoring appliance. This guide describes how to connect the F110 to the network and access the setup functions in the F110's web interface. The *F110 User Guide*, located on our website, contains additional installation details.

If you need further assistance, contact RLE Technologies on our website at <http://www.rletech.com/> (go to the **Support Link**) or by calling **970.484.6510, Option 2**.



## 1 Preparing for Installation

It is important to ensure that you have extra IP addresses available on your network that can be assigned to the Falcon F110. When connecting the F110 to the network, have the following information available. If necessary, ask your IT administrator to provide this information so you can assign it to the F110.

IP address \_\_\_\_\_

Subnet mask \_\_\_\_\_

Default gateway \_\_\_\_\_

## 2 Connecting the Cables

Make the following cable connections:

- 1 Plug one end of the Ethernet cable (provided) into the Network port on the F110 and the other end into the network.
- 2 Plug the 5VDC power adapter (provided) into the Power plug of the F110 and ensure that it is connected to an active Main or UPS power source.

**IMPORTANT** Make the network cable connection before applying power to the F110.

## 3 Configuring Network Communication

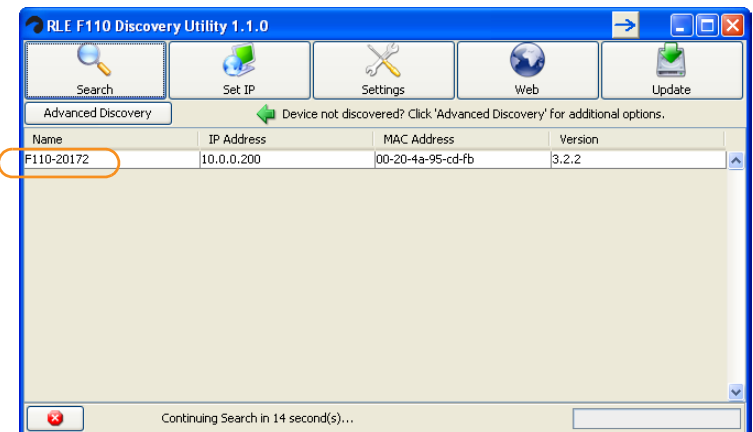
**IMPORTANT** Consult your IT administrator before performing these steps.

At the factory, the Falcon F110 is set to obtain an IP address automatically using DHCP or AutoIP. If you do not have DHCP on your network, the Device Discovery Utility (provided) can detect the Falcon F110, at which point you should assign a static IP address.

To assign an IP address to the F110:

- 1 Install the Device Discovery Utility from the RLE Product User Guide CD (provided) or on the Resources webpage at [www.rletech.com](http://www.rletech.com).
- 2 Open the Device Discovery Utility and click the Search button.

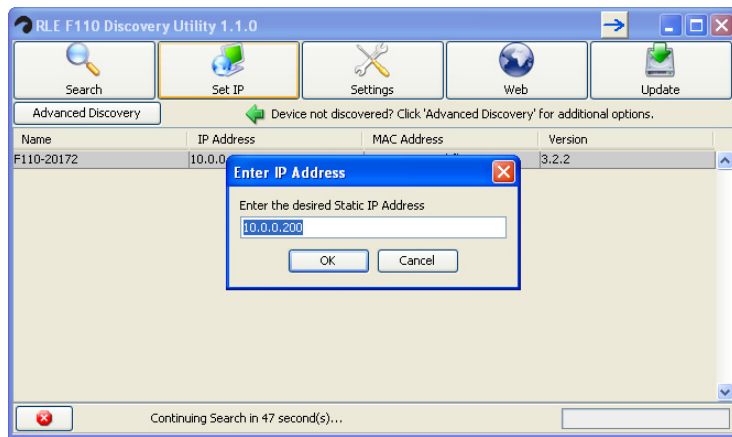
The F110 is listed with the name **RLE-<5-digit number>**. The 5-digit number corresponds with the 5-digit serial number located on the bottom of the F110.



- 3 Left-click on the F110 that needs to be modified.
- 4 Click the Set IP button.
- 5 In the pop-up box, enter the IP address provided by your IT administrator.

**Notes:**

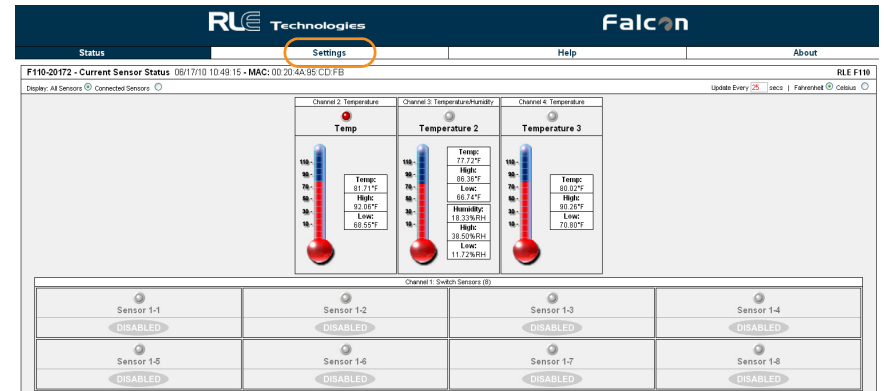
- a If you are configuring the F110 for a DHCP network, enter 0.0.0.0.
- b If you need to change the subnet mask or default gateway, click the Settings button, press enter when prompted for a user name and password, and change the subnet mask and default gateway on the Network Settings web page that displays. Click the Accept Changes button when done.



## 4 Completing the Installation

Once the Falcon F110 has been detected, you can configure it using the Web interface:

- 1 View the Web interface by typing **http://<IP address>** in your Web browser. Use the IP address you assigned to the F110.



- 2 Click the Settings button to display and change the configurable settings of the F110.

**Note:** You do not need to enter a user name or password. When prompted for these, press Enter on your keyboard.

For configuration details, see the *F110 User Guide* at <http://www.rletech.com>.

