



# LOADING FIRMWARE AND CONFIGURATION DATA

## Loading FMS Firmware

You can download current and some past versions of firmware from RLE's website at [www.rletech.com](http://www.rletech.com). It is important to confirm the correct version of firmware before downloading and installing it. The FMS MAC ID is printed on a sticker on the bottom of the unit. FMS units with MAC IDs **00.90.5B.02.00.00** and above accept different firmware than other Falcons.

- ◆ FMS8002, 8126, and 2006 Falcons support firmware version 5.x only
- ◆ FMS8, 20, 20U and FMS32 Falcons support firmware version 6.x only.
- ◆ FLS8 and FLS8-M (Falcon Lite), and F-Series support firmware version 2.x only.
- ◆ FMS-X/FMS-XXXX with bootloader 7.x.x support firmware version 7.x only.
- ◆ FMS-X/FMS-XXXX With Bootloader 2.x.x supports firmware version 8.3.x only.
- ◆ FMS-X/FMS-XXXX With Bootloader 3.x.x supports firmware version 8.4.x only.



### WARNING

**DO NOT ATTEMPT TO LOAD THE WRONG FIRMWARE ONTO THE FMS.** If you have any questions regarding firmware compatibility, visit our FMS webpage at [www.rletech.com](http://www.rletech.com) or call us directly. The firmware load procedure involves using the MIME (multipurpose Internet mail extensions) standard from the FMS web interface. To load firmware to the FMS:

- 1 Go to the RLE website Resources page at <http://www.rletech.com/resources/>.
- 2 Scroll down to the Falcon section and locate the firmware (a .bin file) for the FMS. *Using the same filename*, save it to a local disk.

**IMPORTANT** Do not change the name of the firmware file when you save it. Otherwise, the FMS will not recognize the file.

3 On the FMS interface, go to Configuration>Flash Program.

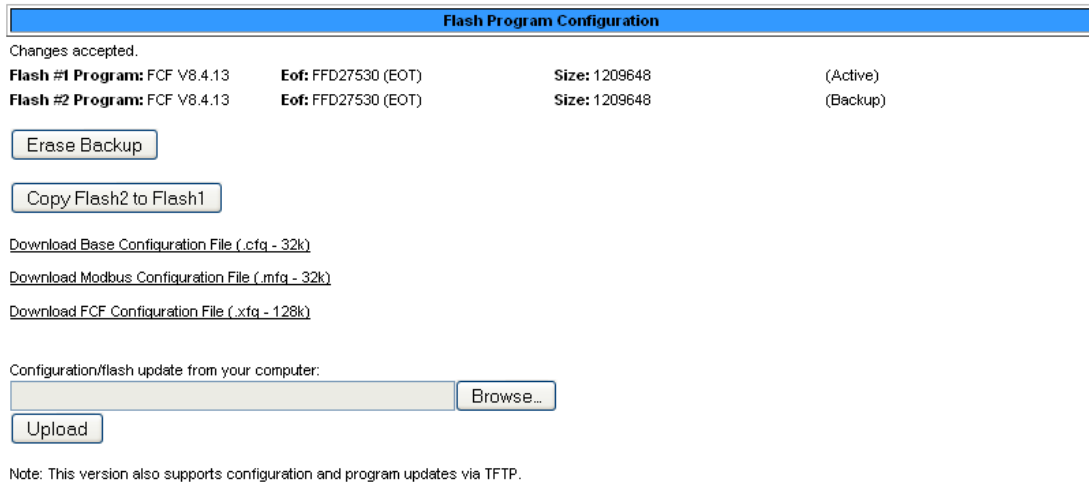


Figure 1 Flash Program Configuration Page

4 Click the Browse button.

5 Locate and choose the firmware file (.bin) that you saved from the RLE website.

The path and name of the firmware file (.bin) displays in the field to the left of the Browse button.

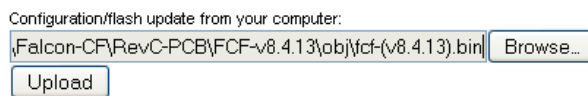
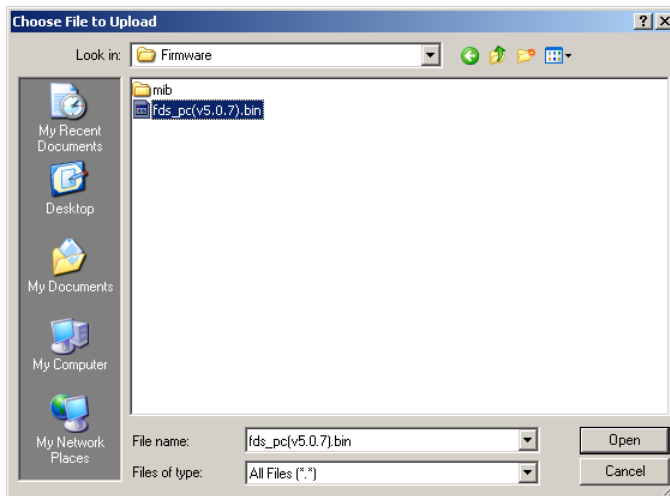
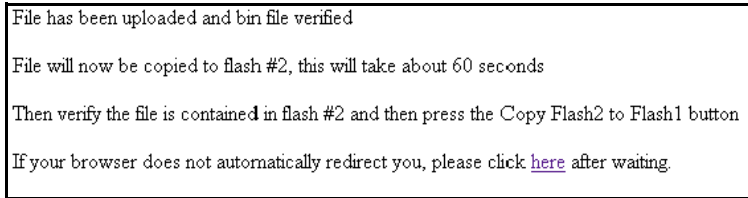


Figure 2 Choosing a Firmware File

**6** Click the Upload button.

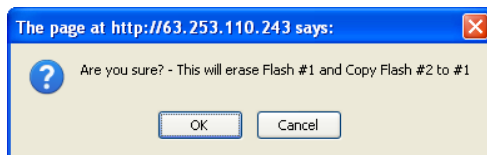
The firmware is loaded while the FMS displays a message confirming that it is loading the new file.



**Figure 3** Firmware Load Messages

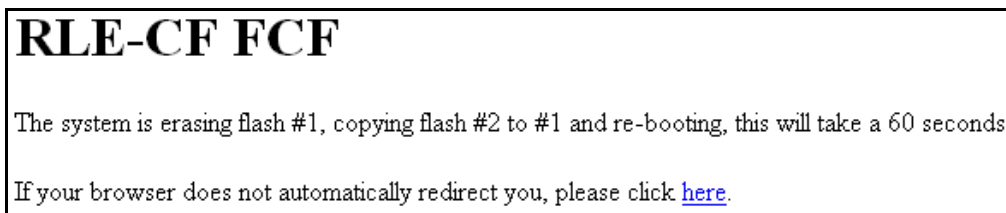
The file is loaded to the Flash #2 Program area, which is also called the Backup area. The Flash #1 Program area (also called the Active area) contains the current flash firmware that is in use.

**7** To copy the firmware you just uploaded from Flash #2 Program to Flash #1 Program, click the Copy Flash2 to Flash1 button. The following prompt displays:



**8** Click OK to start the erase and copy process.

During this process, the following messages display:



**9** If the system does not reboot on its own, click the [here](#) link to display the FMS Home page.

**10** You can verify which firmware version is loaded by going to Configuration>Flash Program and viewing the information under the blue bar.

Flash Program Configuration			
Flash #1 Program: FCF V8.4.13	Eof: FFD27530 (EOT)	Size: 1209648	(Active)
Flash #2 Program: FCF V8.4.13	Eof: FFD27530 (EOT)	Size: 1209648	(Backup)

**Figure 4** Current Firmware Version As Shown in FMS Interface

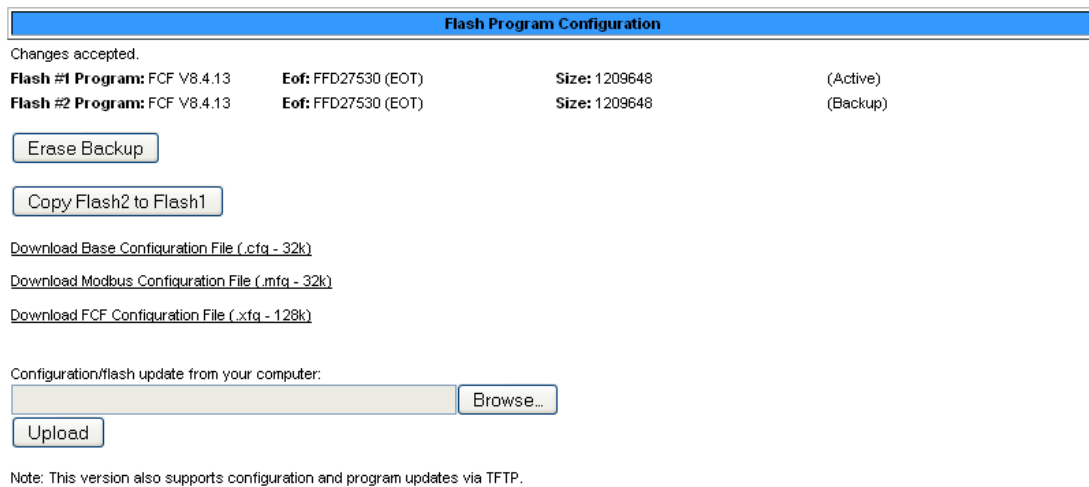
## Loading and Saving FMS Configuration Data

You can save FMS configuration data for backup purposes and to load the same configuration onto other FMS units. In the unlikely event the FMS fails, a replacement FMS can be placed back in service faster by loading the saved configuration information onto it. The configuration settings are saved to a binary file, which cannot currently be edited off line.

### Saving Configuration Data

- 1 On the FMS interface, go to Configuration>Flash Program.

The Flash Program Configuration page displays.



Flash Program Configuration			
Changes accepted.			
<b>Flash #1 Program:</b> FCF V8.4.13	<b>Eof:</b> FFD27530 (EOT)	<b>Size:</b> 1209648	(Active)
<b>Flash #2 Program:</b> FCF V8.4.13	<b>Eof:</b> FFD27530 (EOT)	<b>Size:</b> 1209648	(Backup)

[Download Base Configuration File \(.cfg - 32k\)](#)
  
[Download Modbus Configuration File \(.mfg - 32k\)](#)
  
[Download FCF Configuration File \(.xfg - 128k\)](#)

Configuration/flash update from your computer:

Note: This version also supports configuration and program updates via TFTP.

**Figure 5** Save Configuration File (Flash Program Configuration Page)

You can save three different types of configuration files:

- ◆ Base configuration (.cfg) — Information about physical points other than Modbus points.
- ◆ Modbus configuration (.mfg) — Information about Modbus points.
- ◆ FCF configuration (.xfg) — Information about all points, a combination of the .cfg and .mfg files.

- 2 To save a configuration file, click the link for the type of file you want to save.

A popup prompts you to open or save the file.

- 3 Select the Save File radio button and click OK.

The file is saved to your web browser's download area, or you are prompted to choose a location for the file.

- 4 Use Windows Explorer to verify that the files exist on the PC's hard drive. Copy the files to the desired file backup location.

**IMPORTANT** Do not change the three-letter extension (.cfg, .mfg, or .xfg) of the file name, or the FMS will not recognize the file if you try to load it. You can change the base file name if desired.

## Loading Configuration Data

- 1 On the FMS interface, go to Configuration>Flash Program.

The Flash Program Configuration page displays.

**Flash Program Configuration**

Changes accepted.

<b>Flash #1 Program:</b> FCF V8.4.13	<b>Eof:</b> FFD27530 (EOT)	<b>Size:</b> 1209648	(Active)
<b>Flash #2 Program:</b> FCF V8.4.13	<b>Eof:</b> FFD27530 (EOT)	<b>Size:</b> 1209648	(Backup)

[Download Base Configuration File \(.cfg - 32k\)](#)

[Download Modbus Configuration File \(.mfg - 32k\)](#)

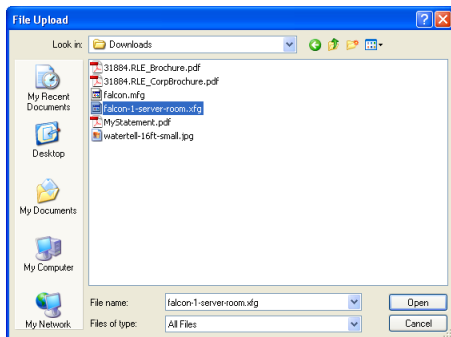
[Download FCF Configuration File \(.xfg - 128k\)](#)

Configuration/flash update from your computer:

Note: This version also supports configuration and program updates via TFTP.

**Figure 6** Load Configuration File (Flash Program Configuration Page)

- 2 Click the Browse button to navigate to the location of the configuration file you want to load.



**Figure 7** Navigate to Configuration File Location

**IMPORTANT** Make sure you have not changed the three-letter extension (.cfg, .mfg, or .xfg) of the configuration file, or the FMS will not recognize it.

**3** Once you have selected the file, click the Upload button.

The configuration file is uploaded while the following messages display:

Configuration Updating .. unit will reboot in about 20 seconds

If your browser does not automatically redirect you, please click [here](#).

Once the configuration file is uploaded, the FMS reboots itself.

## RLE Contact Information

If you have questions about these instructions, contact RLE Technologies.

Hours of Business: 8 a.m. to 5 p.m. US Mountain Time

Phone: 970.484.6510

Email: [support@rletech.com](mailto:support@rletech.com)