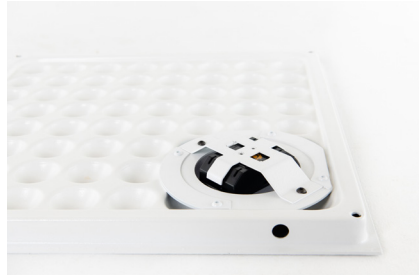


RFM Quick Start Guide

Thank you for purchasing an RFM panel. Before you install your equipment, consult rletech.com to ensure you're working with the most recent version of documentation available. If you need further assistance, please contact RLE Technologies at support@rletech.com.



Triad

v04.20

RLE
Technologies

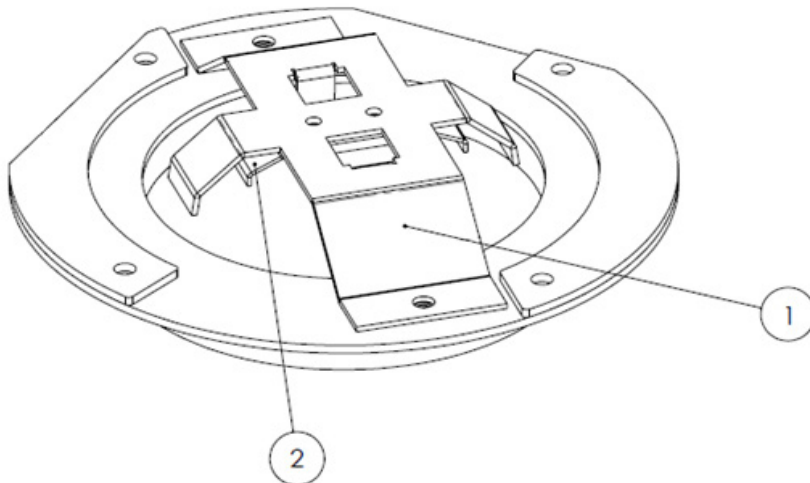
© Raymond & Lae Engineering, Inc. 2011. All rights reserved. RLE® is a registered trademark and Seahawk™, Falcon™, and Raptor™ are trademarks of Raymond & Lae Engineering, Inc. The products sold by RLE Technologies, 104 Racquette Dr., Fort Collins, CO 80524 are subject to the limited warranty, limited liability, and other terms and conditions of sale set forth at <https://www.rletech.com>.

Supplies for Installation

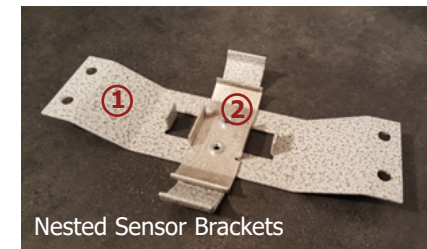
RFM Raised Floor Monitoring Panel
One WiNG sensor

Mount the Sensor

Sensors are installed in brackets that connect to the underside of the floor panel. There are two nested brackets included with each RFM panel.

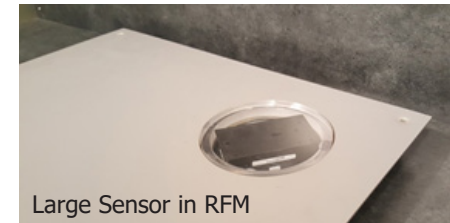


- Bracket 1 secures large sensors like the WiNG-DAP or WiNG-AIR10. Sensors installed in the large bracket must be mounted with the sensor's LID facing the metal bracket, so when the panel is installed in the floor the sensor's label faces toward the subfloor.



- Bracket 2 nests inside bracket 1. The two brackets are used together to secure smaller sensors like the WiNG-T and WiNG-TH. Sensors installed in the small bracket must be mounted with the sensor BASE facing the metal bracket, so when the panel is installed in the floor the sensor's label faces toward the ceiling.
- Before mounting a sensor, pull the battery tab to activate it.

To install a large sensor, use only the large bracket. Remove the bolts that hold the large bracket in place. Remove the smaller nested bracket and set it aside. Place the sensor inside the large bracket and replace the bolts to secure the bracket onto the RFM panel.



Use both brackets to install a small sensor. Remove the bolts that hold the large bracket in place. Place the sensor inside the small nested bracket and replace the bolts to secure the brackets onto the RFM panel.



Once the sensor is mounted, place the RFM panel in your raised floor.

Verify Communication with the WiNG-MGR

Once the panel is installed in the raised floor, verify it is communicating with the WiNG-MGR. The sensors will perform best with a direct line-of-sight to the WING-MGR or wireless access point.

Open the WiNG-MGR web interface and access the individual sensor page for the sensor mounted in the RFM. Click the Wireless Network Metrics tab and look at the Received Signal Strength Indicator (RSSI) from the wireless sensors to ensure that the sensors have a strong connection to the wireless network.

- An RSSI of -40 indicates excellent reception
- RSSI of -90 indicates that the sensor has poor reception and there may be problems with operation.

Detailed information about RSSI values can be found in the WiNG-MGR User Guide.