

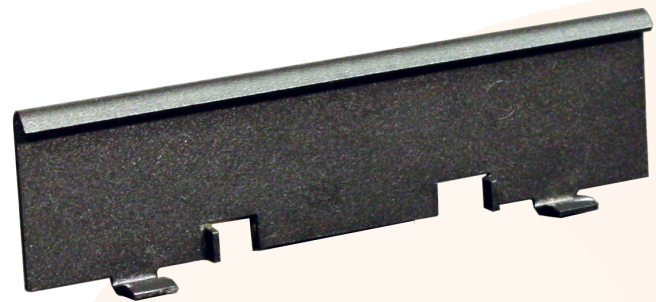
Monitor. Integrate. Alert. Peace of Mind.

### Applications

Safely and securely mount a F200 to any 35mm DIN rail with this custom designed powder coated steel bracket.

### Key Features

- o High quality construction
- o Custom engineered to fit the F200
- o Snaps into place for a secure installation



### Facility Monitoring, Right Where You Need It

Every facility monitoring installation is unique - that's why we've designed a DIN rail mount bracket to fit our popular F200 controller.

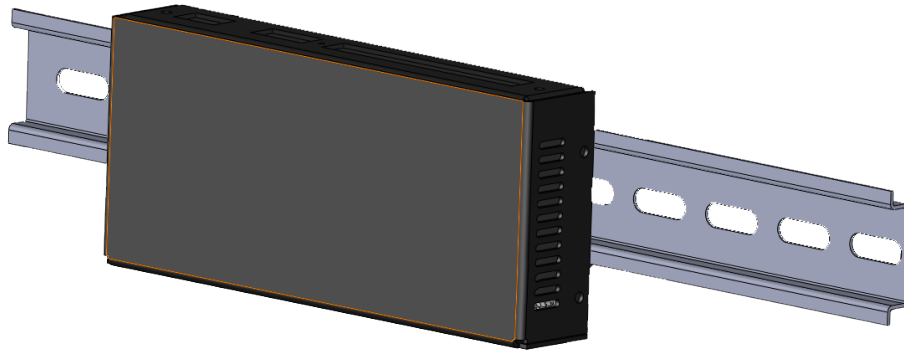
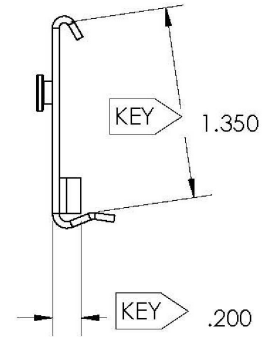
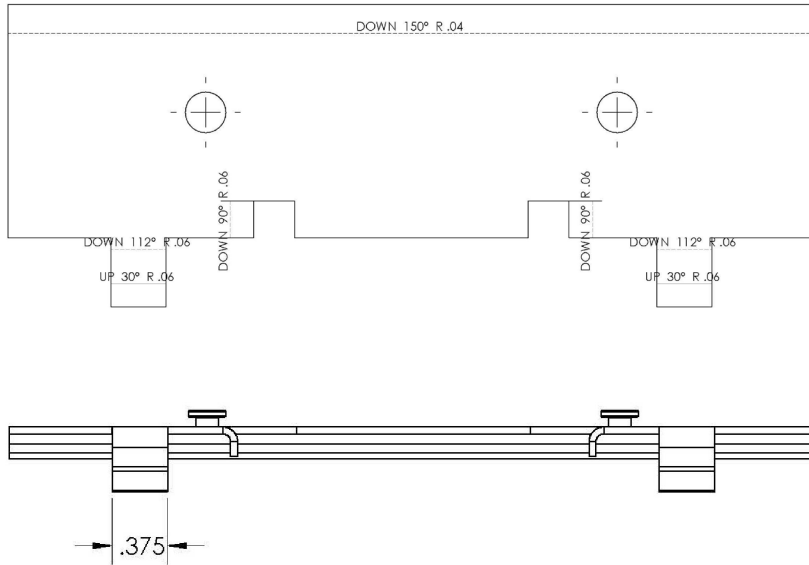
### What Sets RLE's F200 DRM Apart?

- o **Custom designed by RLE's engineering team**, this bracket securely and safely houses the F200.
- o **Powder coated steel** ensures durability and reliability, and matches the F200 enclosure.
- o **Fits any 35mm DIN rail** for a seamless integration into any facility.
- o **Easy to install** - just place the long folded metal edge on top of the DIN rail, and then press until the mounting tabs at the bottom of the mount click into place.

# F200 DRM • Compatible with the F200

## Product Codes

F200 DRM      DIN Rail mount for F200 - compatible with 35mm DIN rail



## Technical Specifications

Materials	Powder coated steel
DIN Rail Compatibility	Fits 35mm DIN rail
Dimensions and Weight	5.48"W x 1.30"D (13.93cmW x 3.30cmD)

