

Monitor. Integrate. Alert. Peace of Mind.

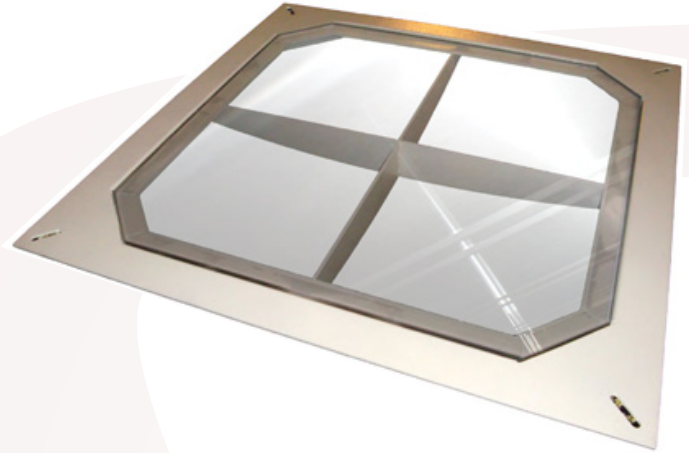
### Applications

Designed to fit into new or existing raised floor systems requiring a space saving design.

- Data Center Foot traffic areas
- Easy viewing of under floor valves, pipes, gauges, electrical

### Key Features

- Scratch resistant window
- Long lasting clarity
- UV resistant
- Virtually unbreakable
- Horizontal and vertical levelers
- Powder coat finish



### Complete Airflow Solutions For Every Facility

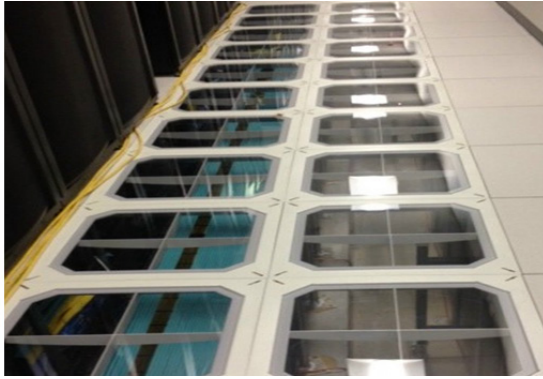
A solid panel with a clear lexan insert that accommodates convenient underfloor viewing.

### What Sets RLE's Clearview Panel Apart?

- **Top set levelers** are designed for easy leveling to different raised floor panels
- **Clear lexan window for optimal viewing** to perform underfloor maintenance spot checks without lifting panels and disrupting the air supply
- **Load rating up to 1,500 pounds**
- **ClearView panels are made in the USA** and include a Grey Flek or Crystal White powder coat finish

## ClearView Panel • Compatible with all new and existing raised floor systems

Product Codes	
CLR-CWT	ClearView Panel, Imperial Size, Crystal White
CLR-GFT	ClearView Panel, Imperial Size, Grey Flek
CLRM-CWT	ClearView Panel, Metric Size, Crystal White
CLRM-GFT	ClearView Panel, Metric Size, Grey Flek

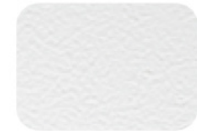


ClearViewPanel Installation

### Triad Powder Coat Color Options



Grey Flek



Crystal White

These color samples are representative only and will vary from the actual color depending on the computer monitor or printer used to view them. Contact RLE for accurate color, gloss and texture sample.

Technical Specifications	
Style	Solid panel
Included Features	Static Dissipative Textured PowderPlate finish, TopSet levelers
Composition	Clear lexan window
Finish	Powder Coat Colors: Grey flek or crystal white.
Compatibility	Compatible with all new and existing raised floor systems
Imperial Size	Dimensions: 24" x 24" (610mm x 610mm) Load Rating Available in 1,500lb
Metric Size	Dimensions: 600mm x 600mm Load Rating Available in 680kg
Country of Origin	United States of America

